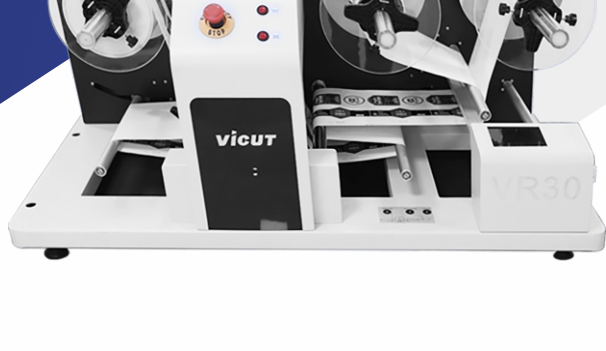




# ROLL LABEL CUTTERS

## VR30

A Desktop Roll To Roll Label Finisher For Labels & Stickers



## PRODUCT PROFILE

The VICUT VR30 is the smart solution of digital label finishing for roll materials. Perfect for short run label finishing, as well as pre-press sampling. The VR30 allows label producers to die-cut labels with ease. It helps companies who are using pre-cut materials to save money by switching to continuous materials. Easy learning software will allow you to be up and running in minutes.

### HOW IT WORKS...

The dedicated software Label Studio will generate the layout and create the marks automatically on design files, the corresponding print file will be produced by appropriate rotary printing system. Once loaded, the VR30 will precisely plot all elements from the individual contours.It achieves much higher speed than regular cutting plotters due to special inline technology of the registration mark, thus offers high performance labels. With automatic waste-removal system, finished labels and cutting waste will be re-winded separately. A roll of ready-cut labels available for use in further conversion and application processes.

### CONVENIENT AND FLEXIBLE USE...

Cutout stickers and labels on virtually any substrate.  
Using registration marks, VR30 is able to digitally die cut any file.  
Compact size and extremely quiet cutting allow it to be used in any environment.  
Saving money by switching from precut label material to die cutting after printing.

### EASILY UPGRADE YOUR BUSINESS...

VR30 is compatible with any roll printer. And its incredibly user friendly software makes loading your image and creating a cutline extremely fast and simple.

### PERFECT FOR SHORT-RUN LABEL PRODUCTION...

Featuring inline cutting and matrix removal, VR30 is the perfect choice for short run label production.

### Automatic contour cutting

Register marks which created by LabelStudio will be automatically scanned and the labels are plotted with high precision.

### USB interface

The device has a USB interface, it's easy to transfer the file from PC to cutter to achieve directly cutting without data missing.



### Roll to roll mode

The film to be plotted is fed from a roll and also made available on a roll for further processing.



### Automatic label waste removal

Automatic matrix removal system continuously weeds label waste for a clean, professional finish.



### Windows 64bit compatible

VR30 can be controlled by 64bit operating systems.



### Able to cut both blank labels & colorful labels

VR30 is perfect for die-cut colorful labels, it also can precut labels before printing.



### "Endless"cutting

Once the material and the file loaded, the device will quickly cut without interruption until the whole roll of material cutting completed.

## APPLICATION

### APPLICABLE FIELD

The device is suitable for processing all kinds of paper labels and film labels such as ink labels, chemical labels, tea labels, coffee labels, beverage labels, bottled water labels, cosmetic labels, home appliance labels, toiletries labels, gum label, wine labels and more. Compatible materials include stickers, glossy paper,PET, PP, PVC, wall paper and so on.

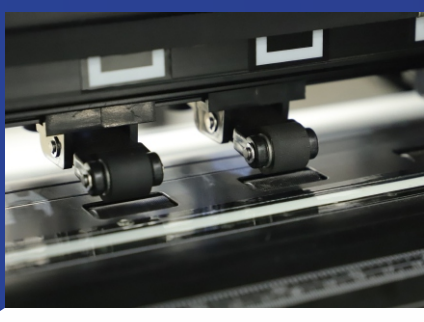
### MARKETING POSITION

VR30 is the perfect roll to roll label finisher for short run label finishing, as well as pre-press sampling. It is an ideal flexible machine for using in any scale quantity required. Great choice of small and medium label production shops and many others.

## TECHNICAL PARAMETERS

Model	Roll Label Cutter VR30
Working mode	roll to roll
Software	Label Studio
Control panel	touch screen control panel
Max.media width	340mm
Roll Width/Diameter	width: 100-320mm; diameter:250mm
Max.cutting width	300mm
Max unit blank label size	300×200mm(for non-printed media)
Max.contour cutting size	280×200mm(for printed media)
Max.cutting speed (straight-line)	37.8"/s(960mm/S)
Max.down force	750g(3g/step)
Mechanical resolution	0.0125
Repeating precision	<+-0.08mm
Drives control	servo
Interface	USB
CPU	64 BIT DSP 32M flash
Noise	35 DB or less
Ambient temperature	5-35 degrees
Support file format	HPGL commands
Machine power	150w
Machine dimensions	140x68x65cm
G.W/N.W	110/75kgs(154.3lb/121.3lb)
Packing size	145×80×80cm/0.93cbm

## DETAILS DESCRIPTION



### STEEL THORN AND ROLLER PINCH

The machine is equipped with steel thorn which can fix media effectively to avoid any sliding and ensure the feeding precision. The distance between each roller can be adjusted to fit for different size media.



### RED LIGHT OPTICAL SENSOR

Adopted with advanced registration mark system, the optical sensor will scan the special marks which generated by the label studio software, then feedback to main board. Thus, device will cut accordingly.



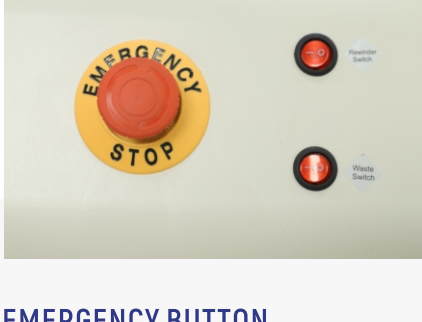
### LABEL STUDIO SOFTWARE

The software generates layout and create marks automatically on design works, then printing files and cutting files will be saved correspondingly.The distance from mark points to the edge can be set as only 3mm, to save material a lot.



### FAN INHALING HOLE

It can absorb the material to the machine point more convenient to achieve high precision.



### EMERGENCY BUTTON

When the device encounters any problems during working, press this button at the first time,it will stop working immediately.



### WEB TENSION CONTROL SYSTEM

With special, designed web tension control system, the media is regulated tightly to ensure precisely and fast cutting.



### WASTE-REMOVAL SYSTEM

With equipped a discharge system, operator can easily control waste-removal function by pressing two buttons ON/OFF. Therefore, providing easier further labeling process.



### TOUCH SCREEN CONTROL PANEL

Through the professional UI design, ViCut has developed and integrated the touch screen control panel system, which makes the operation more convenient and user-friendly.



### Media fixture.

Special for fixing the media on the correct position without shift.

### USB cable slot.

Fix the USB cable, to avoid accidental sliding.



### REAR COOLING HOLES

The rear cooling holes not only ensures the heat dissipation of electrical components, but also makes the appearance of the machine more eye-catching.



### DISC FIXING MATERIAL

The paper is fixed in the middle of two disks by using double disc to fix the paper, so as to ensure that the paper is not offset in the process of cutting.



### TOOL STORAGE GROOVE

A tool storage slot is designed on the top of the cover plate of the machine head, which is used to place small objects such as knives, convenient to use.

## DETAILS DESCRIPTION

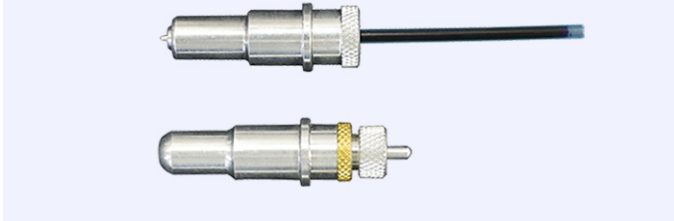


**Drag blade for standard films, script, masking film, etc.** Cutting angle 30°, wedge angle 30°, Offset 0.25 mm, diameter 1mm.

**Drag blade for thick media.**

Cutting angle 60°, wedge angle 30°, Offset 0.25mm, diameter 1mm.

**Drag blade for small fonts, stickers, thin paper, etc.** Cutting angle 45°, wedge angle 30°, Offset 0.25mm,diameter 1mm.



### BLADE HOLDER:

This precision engineered components sits in the dual tool head and holds the cutting blade of choice. The tool is manually adjustable to obtain the desired amount of “ blade out” for the job in hand.

### CALIBRATION TOOL:

Used at set up and then periodically, to calibrate the cutter.

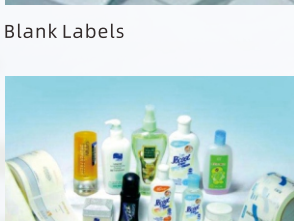
## SAMPLE DISPLAY



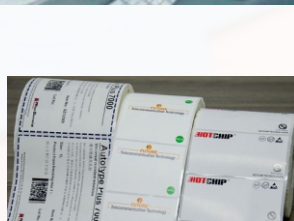
Blank Labels



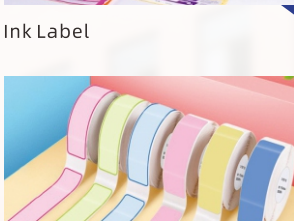
Ink Label



Toiletries Label



Name Plate



Identification Label



Red Wine Labels



Dumb Gold Paper

